

# SQ41i

Individual sequin device

## Next generation of sequin device

Take your sales to new levels  
with SWF's SQ41i sequin device



**SUNSTAR CO., LTD.**

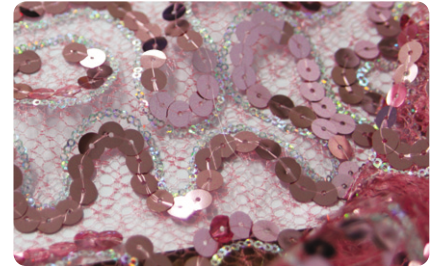
Head office #178-67, GAJWA-DONG, SEO-GU, INCHEON, KOREA  
tel +82(0)32 580 5980-93 fax +82(0)32 579 8350-51 [www.sunstar.co.kr](http://www.sunstar.co.kr)



For W24H service  
[www.swf-service.com](http://www.swf-service.com)

## Main Features

- Two different size spangles
- Automatic feeding system
- Optimum use of double sequin device
- Diverse sequin embroidery



## Practical Use

### Standard function

- 1 Same size & shape, different color



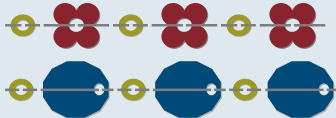
- 2 Same size, different shape & color



- 3 Different size & color, same shape



- 4 Different size & color & shape



### Repeat function

- 5 Same size & shape, different color



- 6 Same size, different shape & color



- 7 Different size & color, same shape

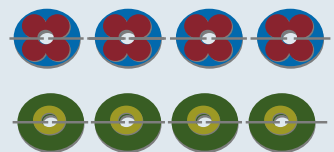


- 8 Different size & shape & color

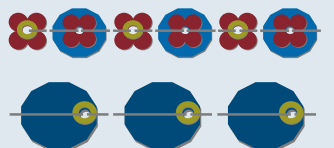


### Overlapping function

- 9 Same size, different shape



- 10 Different size & shape



## Specifications

Max. Speed	1,200 rpm [DM Series for 3/5/7/9 mm]	
Sequin Device Attachment Type	L	Left Side
	R	Right Side
Sequin Size [mm]	ø3 ~ ø9	
Motor	Pulse Motor x 2	
Compressed Air	0.49 Mpa [5.0kgf/cm2]	
Reel Size [mm]	Normal	ø180
	Max	ø225
Application Spangle Size	3 ~ 9 [mm]	
Applicable Models	DM, SB, CE, CA, TA, K Series	
	[Unable to be attached to old model's Electronic Parts]	

We can make some modification for improvements without previous notice.